

Sheet No.

AQF EM 011E Materials

Determination of chlorine, bromine and sulfur in solder materials

1/2

Instruments : AQF-100

Method : Combustion-ion chromatography

Related standard :

Concentrations of fluorine, chlorine, bromine, iodine, and sulfur can be determined and accurately by using a combustion ion chromatography (CIC) system combining an Automatic Quick Furnace Model AQF-100 which safely combusts samples with an ion chromatograph.

Sample name	Solder paste
Sample status	
Measuring items	Chlorine (Cl), Bromine (Br), Sulfur (S)
Measurement principle	<p>Sample is thermally decomposed in argon (Ar) atmosphere, then combusted in oxygen (O₂) atmosphere. Halogens in the sample are converted to hydrogen halide and halogen gas and sulfur turns into sulfur oxide. These components are collected into absorbing solution and converted to halide ion and sulfate ion. The resulting solution is analyzed by injecting into an ion chromatograph (IC).</p> <p>Analyzing flow [Sample weighing]→[Combustion]→[Collection of combustion gas]→[IC analysis]</p>
Parameters	<p>1. AQF-100</p> <p>Sample size : 50 to 100mg Sample boat : Ceramic sample boat, SXSMBS Additive : WO₃ Pyrolysis tube : Quartz tube filled with quartz wool Absorbent : 300ppm Hydrogen peroxide / water Mode:</p> <p>Heater Temp. Inlet : 900degC Outlet : 1000degC Gas flow Ar : 200ml/min O₂ : 400ml/min</p> <p>GA-100 Absorbent volume : 10ml Sampling loop : 100ul Absorption tube : For10ml Water supply : 2 Ar flow for water supply : 100ml/min</p>

Sheet No.

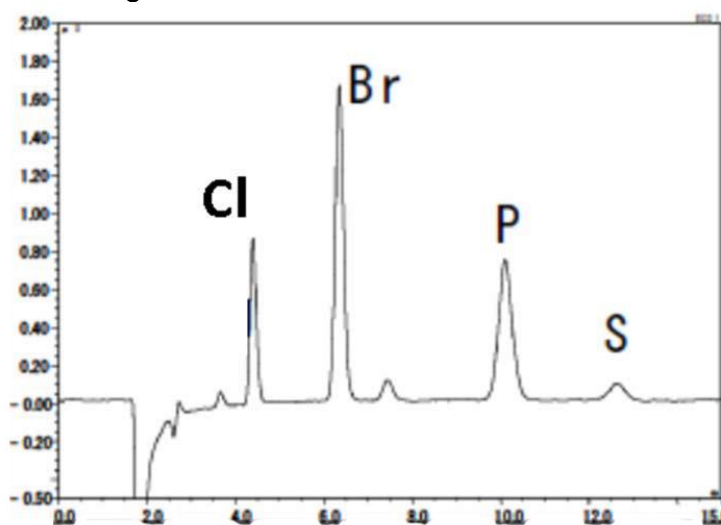
AQF EM 011E Determination of chlorine, bromine and sulfur in solder materials — 2/2

2. Ion chromatograph

Ion chromatograph : DIONEX ICS-1500
 Column : DIONEX Ion Pack AG12A / Ion Pack AS12A
 Eluent : 2.7mM Na₂CO₃ / 0.3mM NaHCO₃
 Eluent flow : 1.50ml / min
 Detector : Conductivity
 Suppressor : ASRS-4-mm
 Measuring time : 15min
 Sampling loop : 100 ul using GA-100 sampling loop
 Calibration : F Cl Br S :0.1ppm to 10ppm

Results

Chromatogram



Results

Sample	(ppm)		
	Cl	Br	S
Solder paste	5.03	36.3	8.11

Remarks

*Handling of reagents: Confirm labels and safety data sheets of reagents and handle them with enough care.
 *Automation is possible by using an Automatic Sample Changer, ASC-120S.
 When ASC-120S is used, the boat to be used will be a ceramic boat, TX3SCY.

*This application sheet is provided as reference, and does not assure the measurement results. Please consider analysis environment, external factors and sample nature for optimal conditions before the measurement.

AQF100_06_002E