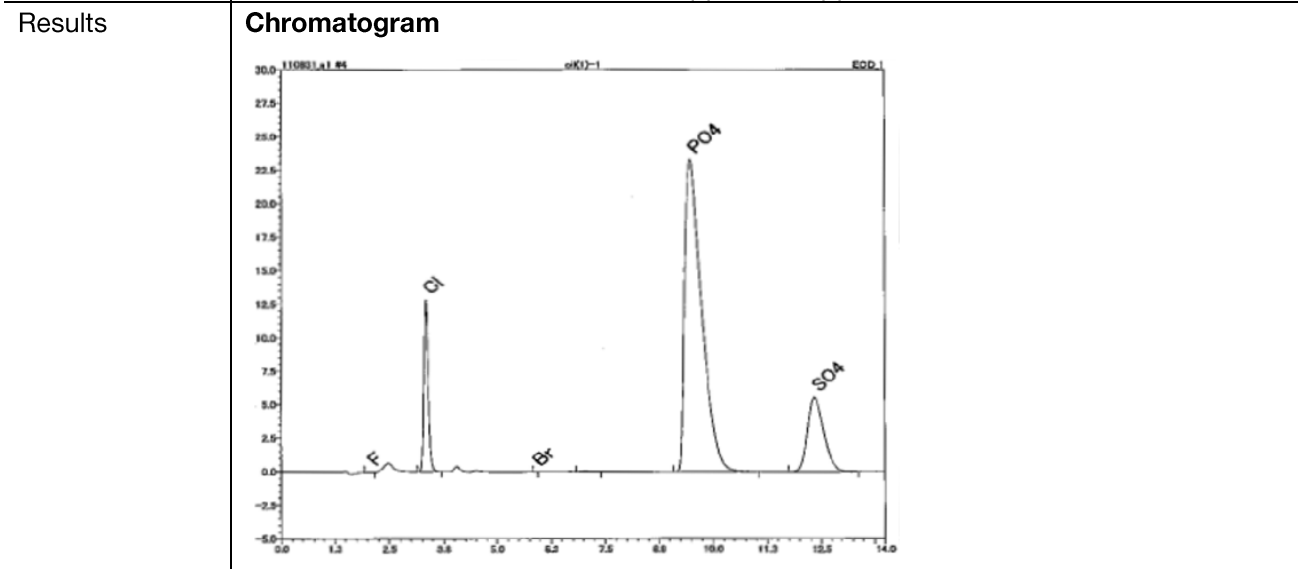


Sheet No.

AQF WA 018E Determination of chlorine and sulfur in standard solution for controlling the diagnostic method of the habitat of aquatic organisms _____ 2/2

	<p>2. Ion chromatograph</p> <p>Ion chromatograph : DIONEX ICS-1500 Column : DIONEX Ion Pack AG12A / Ion Pack AS12A Eluent : 2.7mM Na₂CO₃ / 0.3mM NaHCO₃ Eluent flow : 1.50ml / min Detector : Conductivity Suppressor : ASRS-4-mm Measuring time : 15min Sampling loop : 100 ul using GA-210 sampling loop Calibration : F Cl Br S :0.1ppm to 5.0ppm</p>
--	--



Results

	Measurement			
	Cl (mg/kg)		S (mg/kg)	
CERTIFY	9500	+/-50	6500	+/-40
1	8156		6043	
2	8116		6172	
3	7842		6224	
Avg.	8038		6147	
RSD(%)	2.13		1.51	

Remarks

- *Handling of reagents: Confirm labels and safety data sheets of reagents and handle them with enough care.
- *Automation is possible by using an Automatic Sample Changer, ASC-240S. When ASC-240S is used, the boat to be used will be a ceramic boat, TX3SCX.
- *Use an internal standard material other than phosphate ion (PO₄ 3-) when analysis is performed by the internal standard method.

*This application sheet is provided as reference, and does not assure the measurement results. Please consider analysis environment, external factors and sample nature for optimal conditions before the measurement.