

Sheet No.

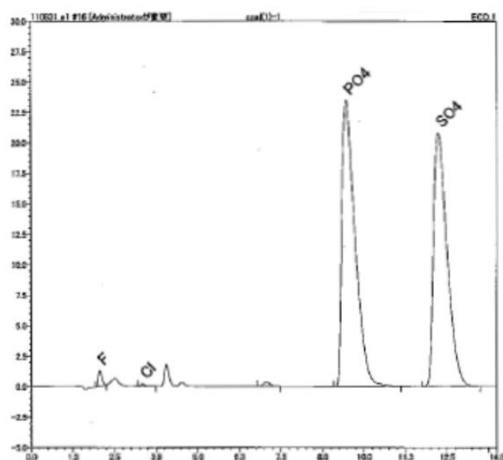
AQF MR 022E Determination of fluorine and chlorine in coal certificated reference material 2/2

2. Ion chromatograph

Ion chromatograph : DIONEX DX-320
 Column : DIONEX Ion Pack AG12A / Ion Pack AS12A
 Eluent : 2.7mM Na₂CO₃ / 0.3mM NaHCO₃
 Eluent flow : 1.50ml / min
 Detector : Conductivity
 Suppressor : ASRS-4-mm
 Measuring time : 15min
 Sampling loop : 100 μl using GA-210 sampling loop
 Calibration : F Cl Br S :0.1ppm to 10ppm

Results

Chromatogram



Results

	Measurement							
	F(mg/kg)		Cl(mg/kg)		Br(mg/kg)		S(mg/kg)	
CERTIFY	225		(59)		-		-	
1	217		(38.4)		/	/	/	/
2	201		(41.5)		/	/	/	/
3	208		(39.7)		/	/	/	/
Avg.	209		(39.9)		/	/	/	/
RSD(%)	3.90		(3.94)		/	/	/	/

Recovery F=93%

Remarks

*Handling of reagents: Confirm labels and safety data sheets of reagents and handle them with enough care.
 *Automation is possible by using an Automatic Sample Changer ASC-240S.
 When ASC-240S is used, the boat to be used will be a ceramic boat.

*This application sheet is provided as reference, and does not assure the measurement results. Please consider analysis environment, external factors and sample nature for optimal conditions before the measurement.

AQF2100H_11_005E